

KANGAROO SERIES

**True Source
of Energy**

MSE 345-370 Watt



Fully Automated & Largest Manufacturing Facility in Australia



Our Approach

We believe high quality solar power should be produced locally at globally competitive pricing.

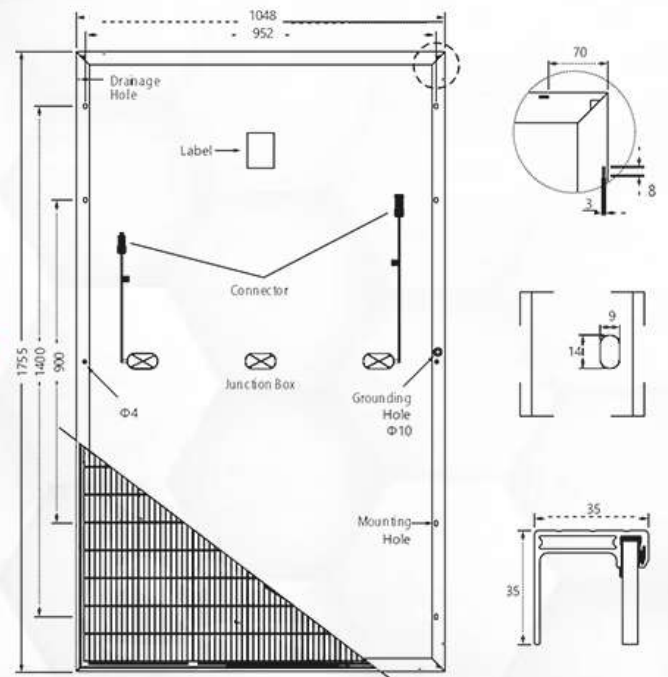


Our Quality

- > 2400 pa wind & 5400 pa mechanical loads
- > High temperature operation
- > Easy module replacement
- > Quality control and traceability by stringent
- > QMS system
- > State of ART fully automatic facility
- > Earth leakage tested to 3600V DC
- > Double Electro-Luminescence (EL) tested
- > Built to perform in low light condition
- > Module Pass fire class C performance per UL790

Module Design

| | |
|----------------------|---|
| Cells Type | Mono 166x83mm |
| Weight | 19kg |
| Dimension | 1755x1048x35mm (LxWxT) |
| Output Cables | 4.0 mm; Portrait: N 400mm/P 300mm, Cable length can be customized |
| No. of Cells | 120 (6x20) |
| Glass | 3.2 mm High Transmission, Antireflection Coating |
| Junction box | IP68, 3 Bypass Diodes |
| Connector | QC Solar (Suzhou) Corporation(QC4.10-cd) OR Sta ubli Electrical Connector AG (PV -KST4 EVO2/xy _UR; PV-KBT4-EVO2/xy _UR) |
| Packing | 31pcs/pallet, 372pcs/20GP, 858pcs/40HQ |



AUSTRALIAN
QUALITY THAT
YOU CAN TRUST



| Modules | MSE-345W-m60H | | MSE-350W-m60H | | MSE-355W-m60H | | MSE-360W-m60H | | MSE-365W-m60H | | MSE-370W-m60H | |
|----------------------------|---------------|-------|---------------|-------|---------------|-------|---------------|-------|---------------|-------|---------------|-------|
| | STC | NOCT | STC | NOCT | STC | NOCT | STC | NOCT | STC | NOCT | STC | NOCT |
| Maximum Power(Pmax) | 345W | 260W | 350W | 266W | 355W | 268W | 360W | 270W | 365W | 274W | 370W | 278W |
| Open-Circuit Voltage(Voc) | 41.25V | 40.4V | 41.4V | 40.8V | 41.6V | 41.1V | 41.8V | 41.4V | 42.0V | 41.7V | 42.2V | 41.9V |
| Maximum Power Voltage(Vmp) | 34.39V | 33.0V | 34.79V | 33.3V | 35.14V | 36.0V | 35.19V | 36.3V | 35.33V | 36.6V | 35.4V | 36.9V |
| Short-circuit Current(ISC) | 10.53A | 7.70A | 10.59A | 7.76A | 10.63A | 7.81A | 11.24A | 7.86A | 11.30A | 7.92A | 11.36A | 7.98A |
| Maximum Power Current(Imp) | 10.03A | 7.27A | 10.06A | 7.31A | 10.1 A | 7.37A | 10.23A | 7.44A | 10.33A | 7.49A | 10.45A | 7.54A |
| Module Efficiency(%) | 19.70% | | 20.01% | | 20.20% | | 20.36% | | 20.46% | | 20.76% | |
| Operating Temperature(°C) | -40 ~ +85°C | | | | | | | | | | | |
| Maximum System Voltage | 1500VDC | | | | | | | | | | | |
| Maximum Series Fuse Rating | 20A | | | | | | | | | | | |
| Power Sorting | 0~+5W | | | | | | | | | | | |
| Power Rating | ±5%/±2%/±2 | | | | | | | | | | | |
| Pmax/Isc/Voc% | | | | | | | | | | | | |

Noct : Irradiance 800w/ M2, Cell Te Mpe Rature 20°C, Spectrum Am1.5, Wind Spe Ed 1m/s

Stc : Irradiance 1000w/m2, Cell Te Mpe Rature 25°C, Spectrum Am1.5



Temperature Ratings

| | |
|----------------------------|-----------|
| Nominal Operating CellTemp | 45°C 2°C |
| Tempcoefficient of Pmax | -0.37%/°C |
| Tempcoefficient of Voc | -0.29%/°C |
| Tempcoefficient of Isc | 0.05%/°C |



Maximum Ratings

| | |
|------------------------|----------------|
| Operational Temp | -40 to +85°C |
| Max system Voltage | 1500V DC (IEC) |
| Max Series Fuse Rating | 20A |
| Mechanical Load | 5400pa |



Performance Warranty

| | |
|-----------------------|--------------------------------|
| Max power degradation | 0.5%/year |
| | 97.5% at the end of first year |
| | 95.0% at the end of 10th year |
| | 85.5% at the end of 25th year |



Made in Australia
20.76%
 Max Module Eff.

Contact Us



Msquare Energy Pty Ltd

 96-100 Toongabbie Rd
 Girraween NSW Australia 2145



1800 336 786 / +61 286073354



www.msquareenergy.com.au



support@msquareenergy.com.au

 /msquareenergy01